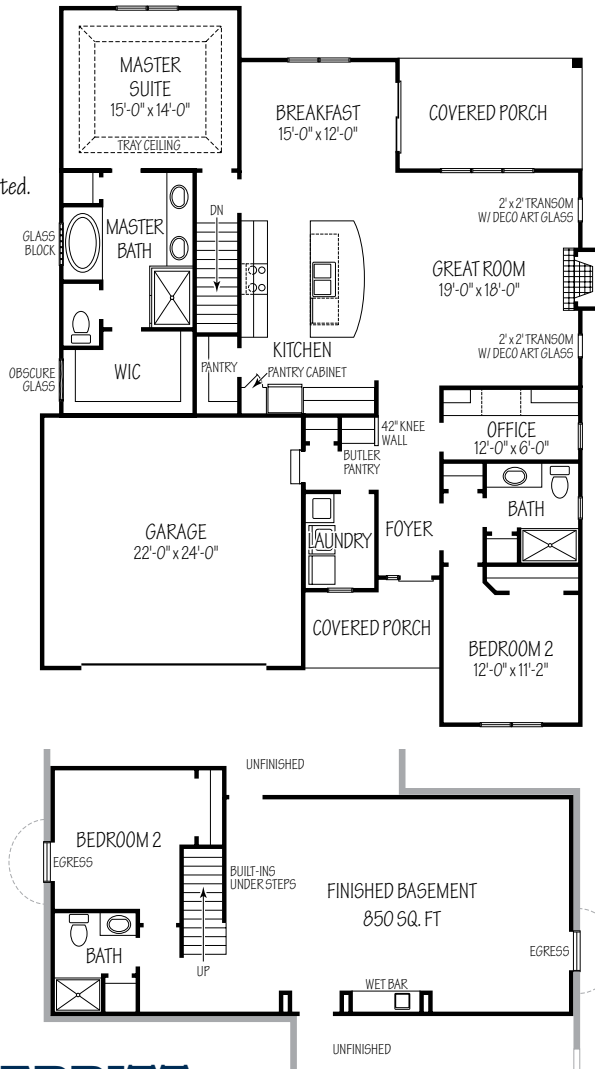


426 Kestrel Way "Model"

1,798 Sq. Ft. + 850 Sq. Ft. Finished Basement



10' Ceilings unless otherwise indicated.



Kitchen

- Built in stainless appliances
- Recessed spice area behind range
- Maple panel cabinets with crown
- Undermount sink & faucet
- Tile backsplashes with glass accents
- Large island with lunchcounter
- Laminated wood flooring
- Walk-in pantry

Master Suite

- Trayed ceiling with crown
- Accent lighting

Master Bath

- 2 separate undermount sinks
- Tile backsplashes
- Glass block
- Walk-in closet with transom glass
- Tiled shower

Great Room

- Fireplace with masonry face and stone mantle
- Transom windows w/specialty art glass
- Paddle fan

Main Bath

- Upgraded sink
- Tile backsplashes
- Deco wall art

Foyer

- Laminated wood flooring
- Deco wall art

Laundry / Mud Room

- Sink base with drop in sink
- Butler pantry

Office

- Built-in cabinets

Exterior

- Stone front
- Covered porches
- Fully landscaped

Interior

- Laminate flooring
- Wood window sills
- Built-in speaker system
- Professionally decorated
- Green building practices
- SmartStrand® Carpet
- 10'-0" ceilings

Lower Level

- 8'-0" finished daylight basement
- Wet bar with bronze sink
- Full shower bath
- Bedroom
- Built-ins



**R. J. PERRITT
HOMES**
The Green Builder

Homes To Fit Your Lifestyle

www.rjperritthomes.com

Call Bob The Builder 440-897-5872