

77-1121 Sheltered Brook Drive

Water Front Lot

1,708 Sq. Ft. + 1,528 Sq. Ft. Finished Walk-out Basement



Kitchen

- Built in stainless appliances
- Stainless chimney hood
- Built in coffee/tea pot
- Quartz countertops
- Recessed spice area behind range
- Maple panel cabinets with crown
- Undermount sink & faucet
- Tile backsplashes with glass accents
- Large island with lunchcounter
- Bamboo flooring
- Custom pantry shelves with deco art glass

Master Suite

- Trayed ceiling with crown
- Accent lighting
- Water view

Master Bath

- Quartz countertops
- 2 separate undermount sinks
- Tile backsplashes
- Transom window
- Walk-in closet with transom glass
- Built-in drawer storage
- Tiled shower

Great Room

- 13' vaulted ceiling with beams
- Transom windows
- Paddle fan
- Bamboo flooring
- Water view

Main Bath

- Upgraded stone vessel sink
- Tile backsplashes
- Transom glass
- Deco wall art
- Tile flooring

Foyer

- 11' ceilings
- Bamboo flooring
- Deco wall art
- Decorator ledge with niche
- Metal spindle staircase

Laundry/Mud Room

- Sink base with drop in sink and wall cabinets with drip rod
- 6" shelf/coat rack
- Front load washer & dryer

Exterior

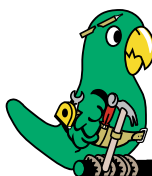
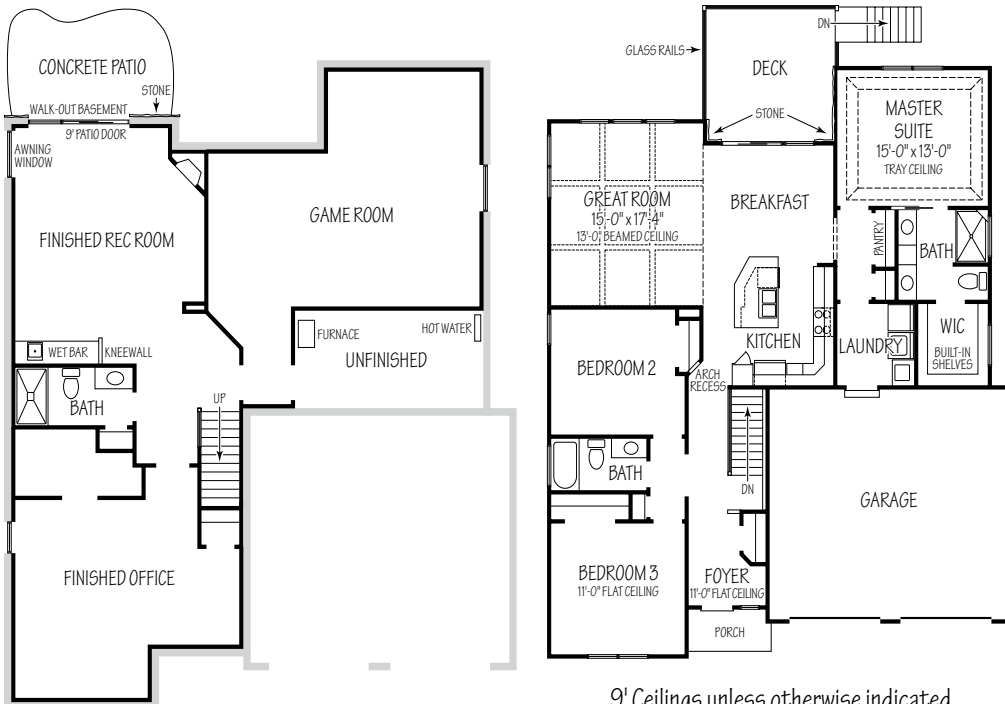
- Stone front & rear
- Deck with glass rail
- Fully landscaped
- Custom vinyl shake siding
- 8'-0" stained front door

Interior

- Large trim throughout
- Wood window sills
- Built-in speaker system
- Professionally decorated
- Green building practices
- SmartStrand® Carpet
- Stainless appliances
- Arch openings
- Window blinds

Lower Level

- 8'-0" finished walk-out basement
- Fireplace with stone face and wood mantle
- Wet bar with copper sink
- Full shower bath
- Office



**R. J. PERRITT
HOMES**
The Green Builder

Homes To Fit Your Lifestyle

www.rjperritthomes.com